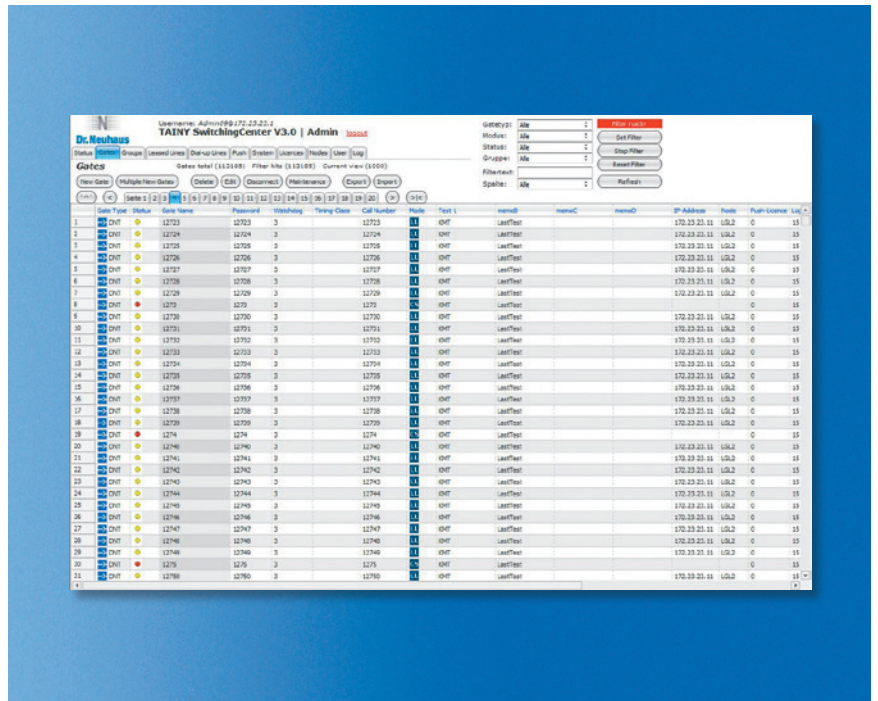


## Benefits:

- Use of the Internet for M2M applications
- Support of protocol standards and investment protection
- Highest scalability and performance
- Uniform management of connections (GPRS, WLAN, LAN)
- Flexible, easy system integration into the control center
- Easy operation
- Trusted technology

## Key Features:

- IP-Telemetrie compliant (DIN 43863-4)
- Supports TSC protocol
- Redundancy and load balancing
- Modular software architecture
- MySQL databases for configuration and log data
- Dial-up, leased-line and push modes
- Visualization of device status
- Heartbeat and watchdog functionality
- Extensive logging
- Group management of connections
- Role-based operation concept, web clients



The TAINY SwitchingCenter (TSC) from Sagemcom Dr. Neuhaus GmbH provides a solid technological basis for cost-efficient, innovative M2M applications in a wide variety of different industries and for many different applications. Solutions profit from the enormous advantages of modern Internet technology, including cost efficiency, reliability, flexibility and investment security in the technological infrastructure.

The TAINY SwitchingCenter offers protocol functionality for bi-directional M2M communications via GPRS or via IP networks. Processes are able to exchange data with one another or with a control center, without requiring fixed IP addresses or a Virtual Private Network (VPN) provided by a third-party service supplier.

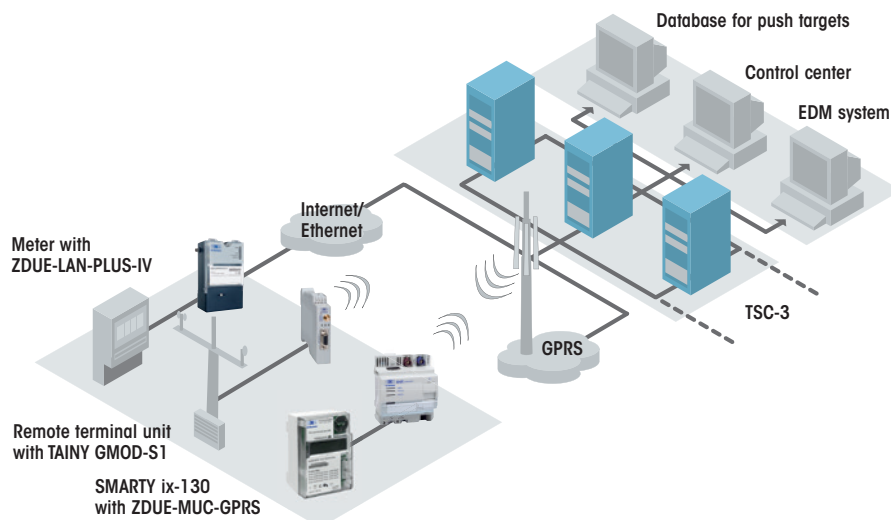
Order number	Product name
317708	TAINY SwitchingCenter v3 Base
317715	TAINY SwitchingCenter v3 Node
317739	TAINY SwitchingCenter v3 Push Target
317746	TAINY SwitchingCenter v3 Admin
317722	TAINY ComPortClient
317716	TAINY SwitchingCenter v3 Gate
317753	TAINY SwitchingCenter v3 Operator
317760	TAINY SwitchingCenter v3 Viewer
317777	TAINY SwitchingCenter v3 Auditor
317791	TAINY SwitchingCenter installation service
317727	TAINY SwitchingCenter v2 Basis upgrade to v3



## System Components

- TAINY SwitchingCenter
- Databases for configuration and log data
- Nodes
- Web server

## Topology



## Technical data

### FUNCTIONALITY

<b>Communication with terminal device</b>	Based on IP-Telemetry protocol (DIN 43863-4) or based on TSC protocol; push mode; leased lines; dial-up connections; number of connections depends on license
<b>Communication with control center</b>	Via TAINY ComPortClient (up to 255 connections), controlled via AT commands using the virtual call numbers stored; via IPT client (IPT-SDK)
<b>User privilege administration</b>	Different user privileges can be allocated to each user account: connection query, connection editing, connection termination
<b>Group administration of terminal devices</b>	Serves to group the connections; manager privileges can be limited to groups

### USER INTERFACE

<b>Administration</b>	TAINY SwitchingCenter admin interface (web client), incl. input of license key, set-up and administration of groups, user accounts and their privileges
<b>Management and operation</b>	TAINY SwitchingCenter operator, viewer and auditor interfaces (web client), incl. set-up and configuration of connections; set-up of leased lines; viewing of status of leased lines, dial-up and push connections

### SYSTEM ENVIRONMENT

<b>Operating system</b>	Windows XP Professional (SP2 or SP3), Windows Server 2003 (SP1 or SP2), Windows Server 2003 R2 (64 Bit, SP1), Windows Server 2008 (32 Bit, SP1), Windows Server 2008 (64 Bit, SP2), Windows Server 2008 R2 (64 Bit, SP1), Windows 7 (32 Bit and 64 Bit, SP1)
<b>Hardware for main database</b>	PC-compatible CPU (Core2Quad or equivalent) with at least 2.66 GHz; RAM at least 4 GB; hard disk at least 10 GB available storage space; Ethernet connection at 1 Gbit/s
<b>Hardware for other components</b>	PC-compatible CPU (Core2Duo or equivalent) with at least 2 GHz; RAM at least 1 GB; hard disk at least 10 GB available storage space; Ethernet connection at 1 Gbit/s
<b>Compatible terminal devices</b>	Include: ZDUE-MUC-GPRS, ZDUE-MUC-DC, TAINY GMOD-S1/S2, TAINY LMOD-S1, ZDUE-GPRS-PLUS-IV, ZDUE-LAN-PLUS-IV and other devices from different manufacturers

### MISCELLANEOUS

<b>Scope of Delivery</b>	CD with TAINY SwitchingCenter (node, database, web server, instruction manual), ComPortClient and instruction manual; separate CD with license key
<b>Order numbers</b>	TAINY SwitchingCenter v3 Base, part no.: 317708; licenses for: TAINY SwitchingCenter v3 Node, part no.: 317715; TAINY SwitchingCenter v3 Push Target, part no.: 317739; TAINY SwitchingCenter v3 Admin, part no.: 317746; TAINY ComPortClient, part no.: 317722; TAINY SwitchingCenter v3 Gate: 317716; TAINY SwitchingCenter v3 Operator, part no.: 317753; TAINY SwitchingCenter v3 Viewer, part no.: 317760; TAINY SwitchingCenter v3 Auditor, part no.: 317777; TAINY SwitchingCenter installation service, part no.: 317791; TAINY SwitchingCenter v2 Basis upgrade to v3, part no.: 317727

Subject to technical modification. All data are based on manufacturer's specifications. No guarantee or liability for incorrect entries or omissions. All deliveries and services are provided by Sagemcom Dr. Neuhaus GmbH on the basis of the "General Terms and Conditions" in the current version. All product names are trademarks of their respective owners. Sagemcom Dr. Neuhaus GmbH 10/2016, Doc.-No.: 3177AQ010 Rev. 1.4

