

Sagemcom



Siconia® Water Meter UM

A solution for efficient remote management of cold water consumption for water companies

Technical features

METROLOGY

- Nominal diameter : 5/8"x3/4", 3/4" Short & Long, 1"
- Nominal flow rate : 25 gpm, 32 gpm, 55 gpm
- Minimum flow rate : 0,1 gpm, 0,4 gpm
- Max operating pressure: 175 PSI (12 bar)
- Measuring frequency: 2 to 8 Hz
- Mounting in any position (H, V, H/V)
- Sensitive class: U0/D0
- Class of T°: T50
- Pipe material : Brass DZR lead-free, Bronze, Composite

TECHNICAL CERTIFICATIONS

- FCC certification (ongoing)
- UL certification (ongoing)

DRINKING WATER CERTIFICATIONS

- NSF/ANSI 61 & 372 (ongoing)

OPTIONS

- Pressure Sensor
- Acoustic Sensor

COMMUNICATION



LoRaWAN™ Wired Encoder Output (UI1203)

- Data logger (36 months capacity)
- Data security (AES128 encryption)

ADVANCED EDGE COMPUTING SERVICES

- Tamper detection logs and alarms
- Water quality management - backflow detection
- Associated to Siconia Software Suite Data Analytics Module

USAGE

- Ultrasonic meter for residential use

ENERGY

- Lithium Thionyl Chloride battery
- More than 10 years lifetime*

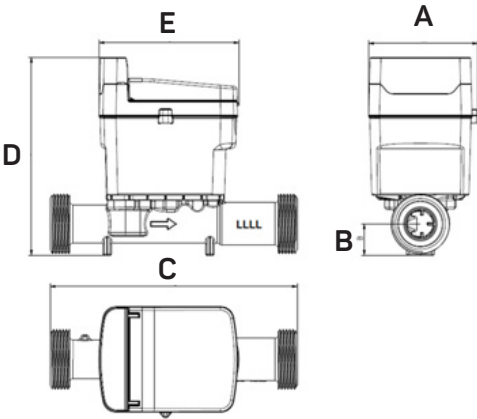
ENVIRONMENT

- Protection class IP68
- Operating Humidity: 0 to 99%
- Operating temperature 0 - 70°C

**Depends on radio configuration, associated data model and environmental conditions*

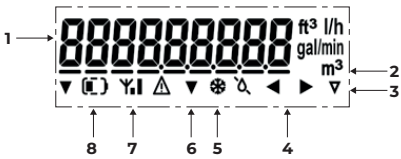
Dimensions

	Siconia® UM20		
	Siconia 5/8"x3/4"	Siconia 3/4" Short & Long	Siconia 1"
A (Box width)	78.4 mm	78.4 mm	78.4 mm
B (Height)	18 mm	18 mm	18 mm
C (Pipe length)	7 1/2" (191mm)	Short : 7 1/2" (191mm) Long : 9" (229mm)	10 3/4" (190mm)
D (Total length)	134,3 mm	134,3 mm	139,3 mm
E (Box length)	106.6 mm	106.6 mm	106.6 mm
Thread	NPSM 1"	NPSM 1"	NPSM 1 1/4"



LCD Interface

The complete range of Siconia® Water WM meters offers an LCD display. With its nine digits (9), it is well above the requirements of the MID specification.



1	The measured volumes are indicated in gal, m³ and ft³ and flows in gal/mn and l/h.
2	Animated icons showing when there is an active flow through the meter
3	MID certified information
4	The counter is in a backflow situation
5	The water line is not filled with water
6	One or more events/alarms are currently active
7	RF status information
8	Battery level information