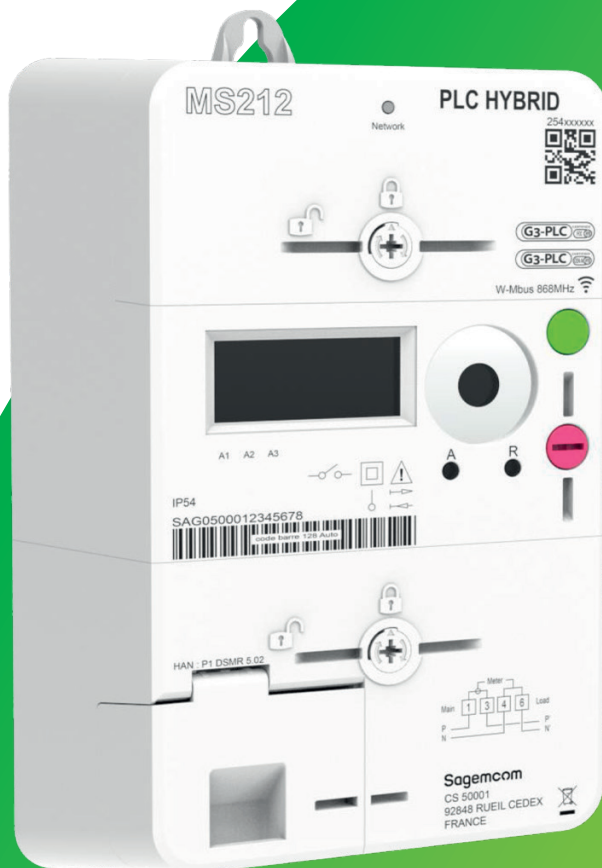


Sagemcom

MS212 (G3-PLC HYBRID or P2P - 4G)

Single Phase Smart Energy Meter



MS212 Products presentation

- New Generation of Multi-Energies **Single-Phase** smart meters
- **Modular and extractible** communication module:
 - G3-PLC RF Hybrid
 - Cellular 2G/4G
- Last Gasp
- DLMS Security Suite 1 (ready for 2)
- Interoperability (DLMS/IDIS)
- Field Proven Datamodel
- G3-Alliance CEN-A and FCC certified / RED Certified

MECHANICAL CHARACTERISTICS	
Sealing method: Top cover and bottom cover are sealed together by ultrasonic welding. The terminal block cover is sealed by one dedicated screw and metallic ferrule.	
Connection diagram	DIN (BS : optional)
Cable cross section	4-35 mm²
Top Mounting bracket	Optional

SPECIFICATIONS		
Communication Interfaces	Interfaces	• Optical port (IEC 62056-31) • P1 DSMR or RS-485 • 1st Auxiliary Relay (5A/230V) • 2nd Auxiliary Relay (Optional)
	RF Hybrid G3-PLC	• 866-928 MHz • G3-PLC HYB Alliance Standard • FCC/CEN-A
	Cellular Modem	• 2G/4G-LTE Modem • Internal antenna + SMA connection possible
Breakers	1 Internal load disconnecter in Phase	• UC2 or UC3 • Max metrological current: I _{max} = 60A or 100A • Max switching current: I _{max} = 90A or 120A

MAIN FUNCTIONALITIES (examples)	
Time of Use	Programmable Load profiles: Capture list/capture COSEM objects/capture period
	Programmable Billing profiles: Capture list/capture COSEM objects/capture period
	Tariff management via built-in programmable output relay
	Calendar/Time of Use management
Power Quality	Voltage Interruptions (Power down)
	Voltage Restoration (Power Up)
	Power Supply Quality
	Neutral current measurement for fraud detection
Security, Integrity and Verification	DLMS Security Suite 0, 1 (ready for 2)
	Auto diagnostic
	Data Storage strategy for integrity
	Local access to the meter by DLMS authentication Password (via the optical port)
Firmware and load Management	Load Disconnection: locally and remotely
	Local and remote Firmware upgrade

Note: this list of functionalities is not exhaustive. Deeper features list and Security detail can be delivered on special demand under Non-Disclosure Agreement (NDA).

SPECIFICATIONS		
Basic Features	Voltage	230 V
	Current	5(60)A or 5(100)A puis 90 A or 120 A
	Max switching current per phase	90 A
	Frequency	50 Hz
	Accuracy	Active Energy: MID Class B/IEC Class 1 Reactive Energy: IEC Class 1
	Communication	Bidirectional
	Quadrants	Q1/Q2/Q3/Q4, Import/Export Energy
	Events Management	Tamper event detection, recording and reporting
Environment	Lifetime	15 years
	Operating temperature	- 40°C/+ 70°C
	Humidity	< 95%
Customer Interaction	Protection Index	IP 54
	Display	• LCD: Dot matrix 5 x 8 • Digit Size: 8x3 mm • Symbols: 48 (3 lines of 16) • Scrolling: auto and manual • Backlight: (optional)
	LEDs	• 1 for Active Energy • 1 for Reactive Energy
RTC	Push Buttons	• Main button for scrolling and breaker connection • Sealable button for maintenance
	RTC back-up power supply	Built-in battery (15 years of lifetime)

FRAUD DETECTION	
Strong Magnetic field Detection and immunity	
Top Cover and Terminal block cover opening/closing detection	
Input - output swap detection	
Neutral current fraud detection	
Mains power cut detection	
Power factor variation detection	

CERTIFICATION	
CE and IEC Declaration	
UC2 or UC3	
DLMS SECURITY suite 0, 1 (ready for suite 2)	
MID Directive 2014/32/EU and the Radio Equipment Directive (RED) 2014/53/EU	
DLMS CTT V3.0	
2G/4G-LTE Modem / RED	
G3 Alliance Certification	
BRML homologation	

All rights reserved. The information and specifications included are subject to change without prior notice. Sagemcom Energy & Telecom tries to ensure that all information in this document is correct, but does not accept liability for error or omission. Non contractual document. All trademarks are registered by their respective owners. Simplified joint stock company Capital 36 626 034,60 Euros - 518 250 337 RCS Nanterre. 11/2025