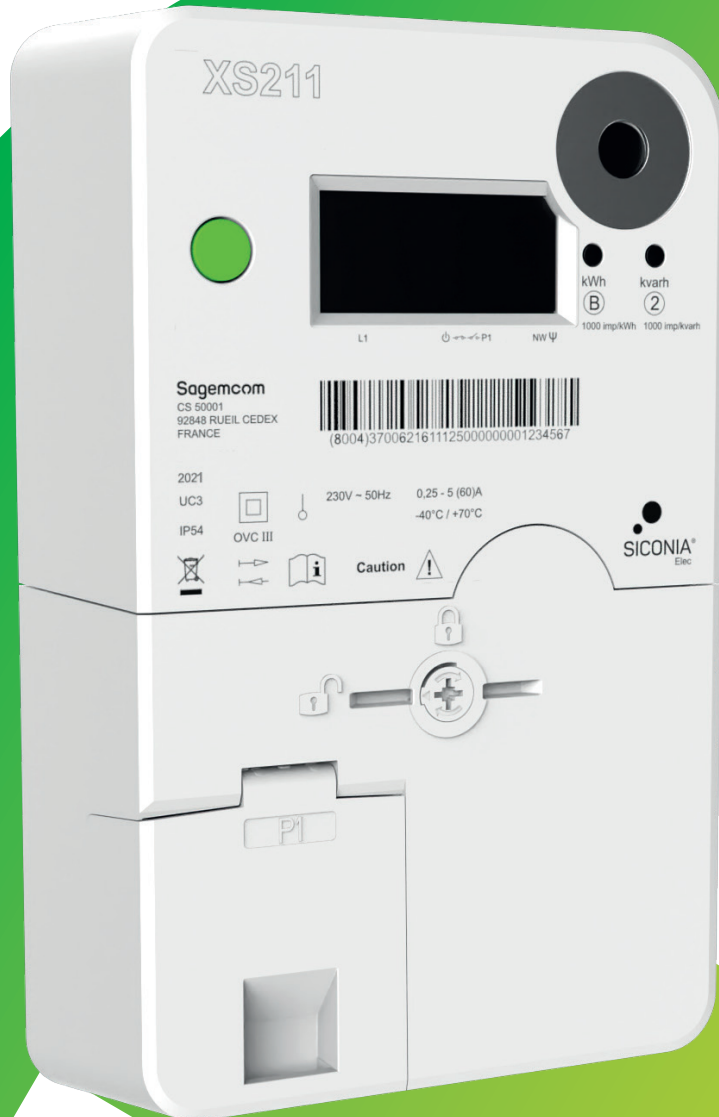


# Sagemcom

## XS211

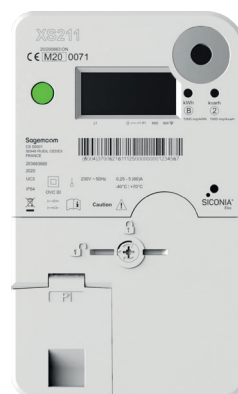
Multi-Energy Electricity Smart Meter  
Single-Phase DIN Standard 2 wires



  
**SICONIA®**  
Elec

- New Generation of Multi-Energies (HAN)
- Cellular communication LTE Cat M/ NB1/NB2 (NB-IoT)
- End-Customer Home Area Network
- Last Gasp & Neutral current measurement
- DLMS Security suite 0 & 1 (2 ready)

SPECIFICATIONS		
Basic Features	Voltage:	230 V
	Current:	5(60-100) A
	Max switching current per phase:	60-100A
	Frequency:	50 Hz ± 6%
	Active Energy:	EN 50470-3 Class B
	Reactive Energy:	IEC 62053-23 Class 2
	Quadrants:	Q1 / Q2 / Q3 / Q4, Import / Export Energy
	Lifetime:	20 years
Environment	Operating temperature:	-40°C / +70°C
	Humidity:	< 95%
	Protection Index:	IP 54
	Fire protection:	5-VB (UL94)
Customer Interaction	Display:	LCD: Dot matrix 5 x 8 Digit Size: 7x3 mm Symbols: 48 (3 lines of 16) Scrolling: auto and manual Backlight: option, remotely configurable
	LEDs:	1 for Active Energy 1 for Reactive Energy
	Push Buttons:	Main button for scrolling and breaker connection Sealable button for maintenance
	Reading without power:	Internal battery
MECHANICAL CHARACTERISTICS		
Sealing method: Top cover and bottom cover are sealed together by ultrasonic welding. The terminal block cover is sealed by one dedicated screw and metallic ferrule.		
Connection diagram:		DIN 43856
Mounting:		DIN 43857
Cable size:		4 – 35 mm²
INTERFACES		
Communication Interfaces	Maintenance interface:	Optical port (IEC 62056-31)
	HAN customer interface:	P1 DSMR 5.0.2
	Wireless M-Bus:	Internal antenna
	Cellular Modem:	LTE Cat M & NB2/NB1 (NB IoT) embedded Modem and available internal antenna connection
Breakers	1 Internal load dis-connector (breakers):	UC3 Max current disc.: I <sub>max</sub> = 60-100A Max switching current disc.: I <sub>max</sub> = 80A
Relay	1 Auxiliary relay:	Monostable (2A)



## Technical features

### TIME OF USE

- Programmable Load profiles: capture list / capture COSEM objects / capture period
- Programmable Billing profiles: capture list / capture COSEM objects / Capture period
- Tariff management via built-in programmable output relay
- Calendar/Time of Use management

### POWER QUALITY

- Voltage Interruptions (Power down)
- Voltage Restoration (Power Up)
- Power Supply Quality

### SECURITY, INTEGRITY AND VERIFICATION

- DLMS Security: suite 0,1 (ready for suite 2)
- Auto diagnostic
- Calibration mode
- Data Storage strategy for integrity
- Local access to the meter by DLMS authentication Password (via the optical port)

### FIRMWARE AND LOAD MANAGEMENT

- Load Disconnection: locally and remotely
- Local and remote Firmware upgrade

### FRAUD DETECTION

- Magnetic field Detection
- Magnetic field immunity
- Top Cover and Terminal block cover opening/closing detection
- Input - output swap detection
- Phase - Neutral swap detection
- Mains power cut detection
- Power factor variation detection

### CERTIFICATION

- MID Directive 2014/32/EU and the Radio Equipment Directive (RED) 2014/53/EU
- CE Declaration
- DLMS CTT V3.0
- LTE CAT NB2/NB1 (NB-IoT) / LTE CATM
- RED
- UC3 (breaker) EN 62055-31
- DLMS SECURITY suite 0, 1 (ready for suite 2)
- Open to special Local/country Certification

*Note: this list of functionalities is not exhaustive. Deeper features list and Security detail can be delivered on special demand under Non-Disclosure Agreement (NDA).*

### CORE ARCHITECTURE

High speed future proof Cortex™-M4 core microprocessor, integrating crypto/hash processor providing hardware acceleration for AES 128, 192, 256, Triple DES, and hash (MD5, SHA-1) and supporting BSI crypto standard.

All rights reserved. The information and specifications included are subject to change without prior notice. Sagemcom Energy & Telecom tries to ensure that all information in this document is correct, but does not accept liability for error or omission. Non contractual document. All trademarks are registered by their respective owners. Simplified joint stock company - Capital 36 626 034,60 Euros - 518 250 337 RCS Nanterre. 11/2025

Sagemcom Energy & Telecom SAS

Headquarters : 4 allée des Messageries

92270 Bois-Colombes - FRANCE

Tel : +33 (0)1 57 61 10 00 - Fax : +33 (0)1 57 61 10 01

www.sagemcom.com

**Sagemcom**